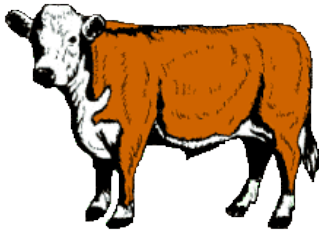


Open Class Beef Cattle Department K



Superintendent:
Maggie Bouma (360) 751-4061

Assistant:
Ashlee Eatherton 360-751-7771

Entry Fees:

\$5.00 Per Head, Stall Fee (No Refunds)

Exhibitors can register at <http://cowlitzcountyfair.fairentry.com> starting Wednesday, June 23, 2021 through 9:59 pm PST on Friday, July 9, 2021.

In Time:

Animals accepted Tuesday, July 20, 2021 from 3:00 pm to 7:00 pm. Please see animal ingress maps on Fair website for directions on how to bring your animal to the Fair.

Release Time:

Exhibitors will be released from 6:00 am to 12:00 pm, noon, Sunday, July 25th.

Specific Rules:

1. Exhibitors should read General Rules and Regulations and Livestock Department Rules found in the 2021 Exhibitor Handbook.
2. A copy of registration papers for each animal are required to accompany registration. Proof of ownership will be the name shown on the registration certificate.
3. Brucellosis – All female cattle over 5 months must be vaccinated for Brucellosis or tested negative to Brucellosis in the last 30 days.
4. All Oregon stock coming in must have brand stamp or a health certificate.
5. All Animals must go through a vet check.
6. Bedding will be furnished by the Fair. Owners will be responsible for the feed and care of their animals.
7. All livestock must be groomed and in show condition at the opening of the Fair each day.
8. Exhibitors are required to keep quarters clean, including wash rack after use.
9. Ear tattoos must be checked with the registration papers. Animals without legible tattoo will not be eligible for showing. Exhibitors need to arrange time with the Superintendent.
10. All cattle must be double tied in stalls.
11. All bulls over one year of age to be shown and lead with nose leads.

12. No exhibitors may receive more than two (2) awards in any one lot.
13. All cattle shown in groups must first have been shown as individuals.
14. Awards of rosettes are up to the Judge's discretion.
15. All 4-H and FFA animals must be registered in exhibitor or farm's name to show in Open Class.

Exhibitor Conduct:

Any exhibitor displaying unacceptable conduct (i.e. profane language, abusive treatment) may, at the discretion of Superintendent and Fair Management, be dismissed and jeopardize awarding of points/premiums.

Show Schedule:

Friday, July 23, 2021 at 10:00 am – Open Class Beef

Herdsmanship Scorecard:

The primary purpose of herdsmanship is to present animal exhibits to the public in a neat, orderly and attractive manner. Your exhibit should be made as educational as possible and attendants should be with herds and ready to answer questions from the public. It is our purpose to keep the barn clean throughout the Fair for the public. The awards will be paid to the herdsman. Must have three or more head.

Animals – Arrangement, Tying, Cleanliness and Grooming, Bedding, Regularity of Feeding	20%
Stalls – Arrangement of Equipment and Supplies, Cleanliness of Equipment, Supplies, Stalls and Alleys	25%
Display Effects – Decorations, Signs, Stall Cards	25%
Exhibitor – Appearance, Attitude, Courtesy, Skill	20%
Educational Value of Exhibit	<u>10%</u>
Total:	100%

Premiums:

1st = \$45.00 2nd = \$35.00 3rd = \$25.00 4th = \$15.00

Special Awards:

Superintendent's Award - Rosette
See additional awards listed below

Division A: BREEDING CATTLE

Classes: *Use the Lots Immediately Following*

1. Angus
2. Polled Hereford
3. Simmentals
4. Limousins
5. Pinzgauers
6. Maine Anjou
7. Hereford
8. Dexter
9. Mini Zebu

10. Mini Hereford
11. Braunvieh
12. Belted Galloway
13. Shorthorn
14. Other Breeds (List Breed)

Lots:

1. Junior Heifer Calf – Calved after January 1, same year
2. Winter Heifer Calf – Calved November 1 through December 31, previous year
3. Senior Heifer Calf – Calved September 1 through October 31, previous year
CALF CHAMPION – ROSETTE
RESERVE CALF CHAMPION - ROSETTE
4. Late Summer Yearling Heifer – Calved July 1 through August 31, previous year
5. Early Summer Yearling Heifer – Calved May 1 through June 30, previous year
6. Late Junior Yearling Heifer – Calved March 1 through April 30, previous year
JUNIOR CHAMPION FEMALE – ROSETTE
RESERVE JUNIOR CHAMPION FEMALE - ROSETTE
7. Early Junior Yearling Heifer – Calved January 1 through February 28, previous year
8. Senior Yearling Heifer – Calved August 1 through December 31, 2 years previous
SENIOR CHAMPION FEMALE – ROSETTE
RESERVE SENIOR CHAMPION FEMALE – ROSETTE
GRAND CHAMPION FEMALE – ROSETTE
RESERVE GRAND CHAMPION FEMALE - ROSETTE
SUPREME CHAMPION FEMALE - BANNER
RESERVE SUPREME CHAMPION FEMALE - BANNER
9. Female Over 2 Years - before August 1, 2 years previous, has calved or been certified with calf
10. Mature Cow – Over 3 Years
11. Female with Offspring – Calved January 1, current year or after
12. Two Females – Bred and owned by exhibitor
13. Junior Bull Calf – Calved after January 1, same year
14. Winter Bull Calf – Calved November 1 through December 31, previous year
15. Senior Bull Calf – Calved September 1 through October 31, previous year
CALF CHAMPION – ROSETTE
RESERVE CALF CHAMPION - ROSETTE
16. Late Summer Yearling Bull – Calved July 1 through August 31, previous year
17. Early Summer Yearling Bull – Calved May 1 through June 30, previous year
18. Late Junior Yearling Bull – Calved March 1 through April 30, previous year
JUNIOR CHAMPION BULL – ROSETTE
RESERVE JUNIOR CHAMPION BULL - ROSETTE
19. Early Junior Yearling Bull – Calved January 1 through February 28, previous year
20. Senior Yearling Bull – Calved September 1 through December 31, 2 years previous
21. Two Year Old Bull – Calved January 1 through August 31, 2 years previous
SENIOR CHAMPION BULL – ROSETTE
RESERVE SENIOR CHAMPION BULL – ROSETTE
GRAND CHAMPION BULL – ROSETTE

